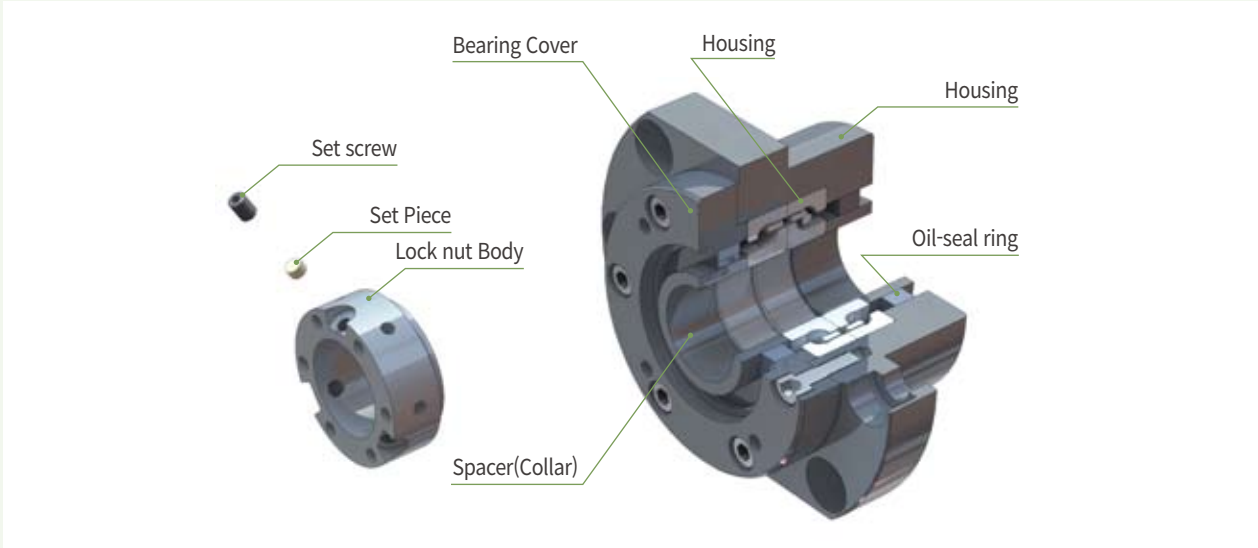


SUPPORT UNIT

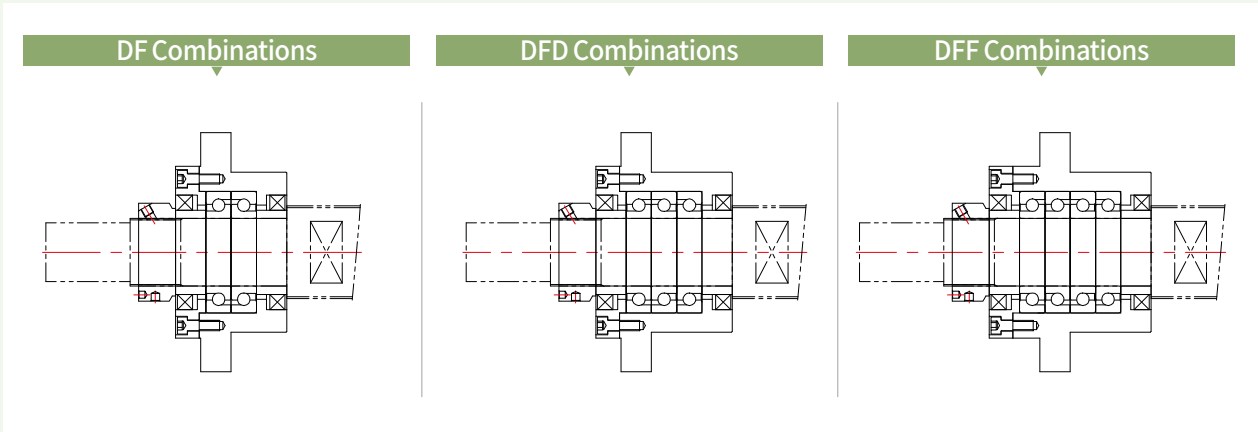
SUPPORT UNIT FOR BALL SCREW (HIGH LOAD)

Support Unit For Ball Screw (High Load)

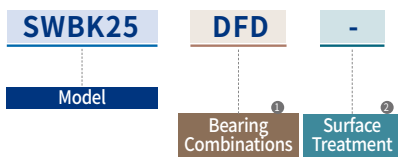
Structure



Bearing Combinations



How to Order



① Bearing Combinations	mark	combinations
	DF	Double-row
	DFD	Triple-row
	DFF	Four-row

② Surface Treatment	mark	Surface Treatment
	no mark	Black Oxide
	RA	Low temperature Black Chrome Plating (Raydent)

SUPPORT UNIT

SUPPORT UNIT FOR BALL SCREW (HIGH LOAD)

Support Unit For Ball Screw (High Load)

List of Bearings

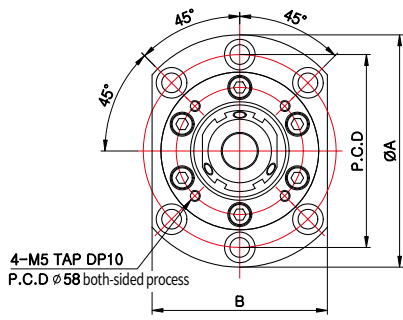
Model	Bearing Combinations	Bearing	Basic Dynamic Load (N)	Permissible Axial Load (N)	Preload (N)	Axial Rigidity N/ μ m	Starting Torque (N·cm)
SWBK17	DF	17TAC47C	23,000	26,600	1,450	630	14
SWBK17	DFD	17TAC47C	37,500	53,000	1,970	930	19
SWBK20	DF	20TAC47C	23,000	26,600	1,450	630	14
SWBK20	DFD	20TAC47C	37,500	53,000	1,970	930	19
SWBK25	DF	25TAC 62C	29,900	40,500	2,280	850	21
SWBK25	DFD	25TAC 62C	48,500	81,500	3,100	1,250	28
SWBK30	DF	30TAC 62C	30,500	43,000	2,400	890	23
SWBK30	DFD	30TAC 62C	50,000	86,000	3,260	1,310	30
SWBK35	DF	35TAC 72C	32,500	50,000	2,750	1,030	27
SWBK35	DFD	35TAC 72C	53,000	100,000	3,740	1,500	34
SWBK35	DFF	35TAC 72C	53,000	100,000	5,490	2,060	43
SWBK40	DF	40TAC 72C	33,500	52,000	2,860	1,080	28
SWBK40	DFD	40TAC 72C	54,000	104,000	3,900	1,590	36
SWBK40	DFF	40TAC 72C	54,000	104,000	5,730	2,150	46

SUPPORT UNIT : SWBK SERIES

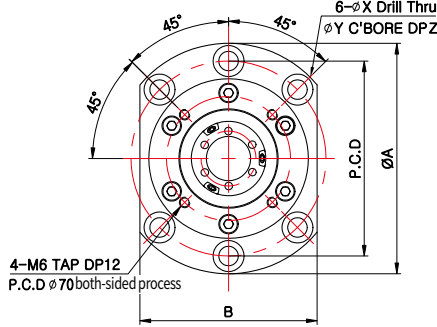


SUPPORT UNIT FOR BALL SCREW (HIGH LOAD)

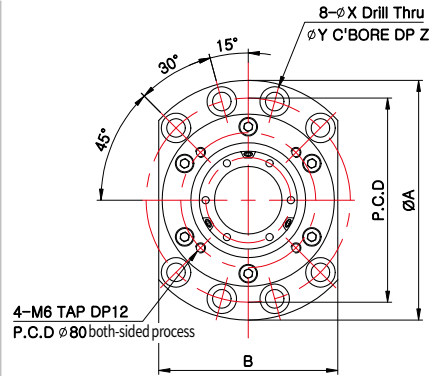
SWBK 17, SWBK 20



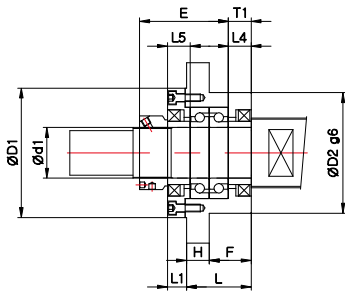
SWBK 25, SWBK 30



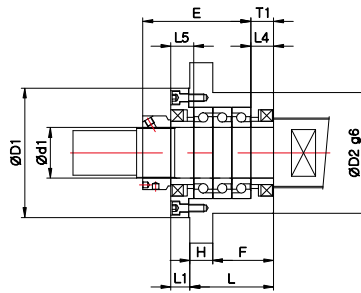
SWBK 35, SWBK 40



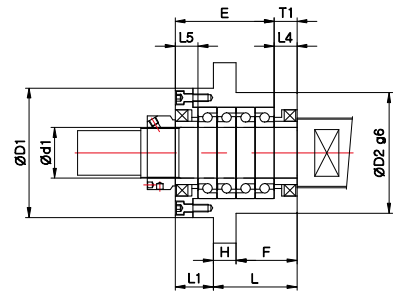
DF Combinations



DFD Combinations



DFF Combinations



Dimensions

Model	Sizes (mm)																	Mass (g)
	Body															Spacer(collar)		
	d1	L	H	F	E	T1	D1	D2	A	P.C.D	B	L1	X	Y	Z	L4	L5	
SWBK17-DF	17	47	15	32	63	15	72	70	106	88	80	13	9	14	8.5	15	15	1900
SWBK17-DFD	17	62	15	47	78	15	72	70	106	88	80	13	9	14	8.5	15	15	2300
SWBK20-DF	20	47	15	32	63	15	72	70	106	88	80	13	9	14	8.5	15	15	1900
SWBK20-DFD	20	62	15	47	78	15	72	70	106	88	80	13	9	14	8.5	15	15	2250
SWBK25-DF	25	51	18	33	68	18	90	85	130	110	100	15	11	17.5	11	18	18	3100
SWBK25-DFD	25	66	18	48	83	18	90	85	130	110	100	15	11	17.5	11	18	18	3400
SWBK30-DF	30	51	18	33	68	18	90	85	130	110	100	15	11	17.5	11	18	18	3000
SWBK30-DFD	30	66	18	48	83	18	90	85	130	110	100	15	11	17.5	11	18	18	3300
SWBK35-DF	35	51	18	33	68	18	102	95	142	121	106	15	11	17.5	11	18	18	3400
SWBK35-DFD	35	66	18	48	83	18	102	95	142	121	106	15	11	17.5	11	18	18	4300
SWBK35-DFF	35	66	18	48	98	18	102	95	142	121	106	30	11	17.5	11	18	18	5000
SWBK40-DF	40	51	18	33	70	18	102	95	142	121	106	15	11	17.5	11	18	18	3600
SWBK40-DFD	40	66	18	48	85	18	102	95	142	121	106	15	11	17.5	11	18	18	4200
SWBK40-DFF	40	66	18	48	100	18	102	95	142	121	106	30	11	17.5	11	18	18	5700